

PO Box 19
Churchill
3842



Friends of Morwell National Park Inc.

Newsletter – December 2013

Website: <http://morwellnp.pangaean.net>
A0016319X

Hello everyone and welcome to this month's newsletter. The last month has been wet and the Park is very lush. The undergrowth is very green and thick throughout the park. The slashing of grass along tracks and boundaries is planned to occur in the new year.

During the last month, Cathy and Mike have purchased the new pole mounted camera to take photos and record video from in the nesting boxes. The camera will be used in the next activity. They were briefed by the manufacturer on how to operate the camera. Cathy will spend some time over the next month experimenting with the camera. Ken has also ordered two motion detection cameras.

During the last month, Parks Victoria put on the **Latrobe Friends & Volunteers BBQ Dinner**. The Parks staff invited volunteers and their families to celebrate another successful year in the local Parks. Andy thanked all groups and spoke about the significant contributions made by Friends Groups and volunteers in park management during 2013. He noted that over 10,000 volunteer hours had been logged by the volunteers working in the Latrobe/Gippsland region. This was an excellent contribution to our local parks.

It was a great opportunity to network with members of other friends groups and celebrate each groups' achievements together. One idea that came up was the possibly of sharing activities with other groups, since most tend to get together on the third Sunday of the month. For a larger project, a larger group will get more completed and much is can to learnt and shared between the group members.



Friends of Morwell National Park Inc: PO Box 19, Churchill, 3842, <http://morwellnp.pangaean.net>.

President: Mike Beamish

Vice-President: Ken Harris

Secretary: Beryl Nelson

Treasurer: John Barker

Publicity: Peter McDonald

Public Officer: Beryl Nelson

Newsletter Editor: Darren Hodgson, hodgson.darren.d@edumail.vic.gov.au

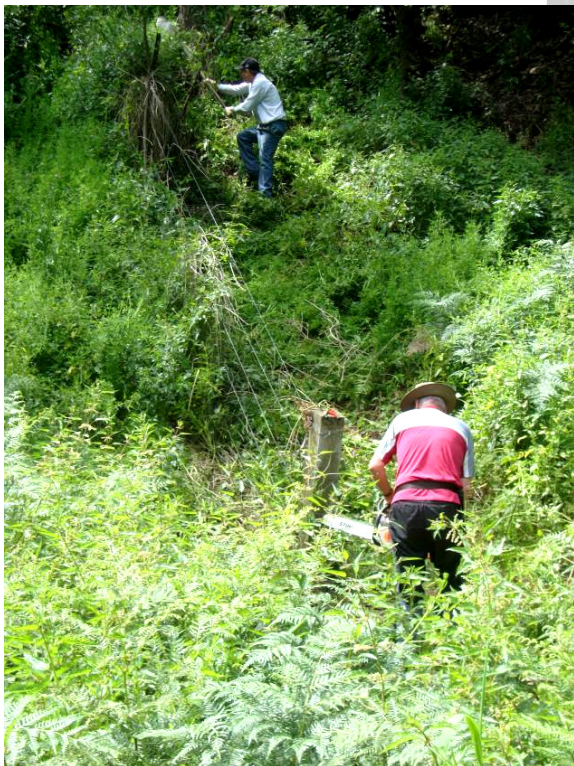
Other members: Wendy Steenbergen, Margaret Barker, Cathy Beamish, Eulalie Brewster, Wendy McDonald, Joan Sikkema, Matt and Kerry Campbell, Australian Plant Society (Latrobe Valley).

November Activity report Part 1 – 17th November

At this activity we had Beryl, Mike, Cathy, Wendy, John, Matt, Kerry, Peter, Darren, and Craig. We had an apology from Margaret. After meeting in the Junction Road car park the group entered via the main track. The chainsaw was used to remove two trees across the main track. The group then stopped between Billy's Weir and the Blue Gum Hill spur track. From this point an old fence line started among the stinging nettles and went up the steep hill.

The group task was to remove this old fence line. The first task was to locate the start of the fence line from among the stinging nettles. The start of the fence line was very overgrown and it needed to be found from among the overgrowth. Star pickets and barbed wire were collected and moved down the hill. It was a steep trip and many stinging nettles needed to be negotiated. The concrete fence posts will remain. The group finished with lunch at Billy's Weir. Over the day the group had piled the ute with collected star pickets and barbed wire.

Over lunch the group decided upon the people needed to support Ken with the Butterfly Orchid survey in the next week. After the activity Craig made it back to tip (just before closing) to get rid of the barb wired and poorer star pickets.



November Activity report Part 2 – 24th November (Butterfly Orchid Survey)

In the second activity for the month, Ken, Beryl and Darren completed the Butterfly Orchid survey. On an overcast day the group completed the survey in Plots A, D and E. Some new orchids were located, but overall the number of orchids is similar to last year, with less flowers being found on the orchids. Plot D was the most difficult to survey with it being located in a steep gully. Ken fell twice entering this plot, but he concluded that in the end it was easier to slide down the hill rather than tackle the many stinging nettles.



December Activity

Sunday 15th December

The group will meet at 10.00am the Junction Road car park to conduct the nesting box survey before the Christmas BBQ celebration at 1.00pm. We will be using the new pole mounted camera to view inside the nesting boxes. Part of the group will check the nesting boxes while the remainder will remove weeds from the nesting boxes understory and Billy's Creek or use the chain saw to remove a tree down at Potato Flat. You will need to bring clothing and footwear suitable for the weather conditions on the day.

At the Christmas BBQ we will look through the photos and other footage from the nesting box survey.



Friends of Morwell National Park Christmas BBQ

Come along and enjoy in a BBQ lunch to celebrate another successful year of activities for the Friends of Morwell National Park

When: Sunday 15th December

Time: 1.00pm

Where: Kerry Road picnic area

What to bring: BYO plate, cutlery, cup/glass and bring either a salad or sweet.

Please come along.